

**40+ MILLION**  
**SAFE & HAPPY FAMILIES**  
WORLD WIDE



**LPG**  
**REGULATORS**



## IGT REGULATOR FOR **LPG GAS APPLIANCES**

Stoves, Cookers, Cabinet, Heaters, Patio Heaters, BBQ, etc. As well as professional installations





DENMARK

## Welcome to Integrated Gas Technologies

IGT is one of the Global leaders in the market for regulators and hoses for butane and propane cylinders.

IGT Headquartered in Denmark has two factories, NBSX located in Ningbo, China since 2004 and IGCT located in Hyderabad, India since 2016. IGT employs 245 people.

IGT uses the best raw materials such as zamac3, brass, steel and rubber for all components. In addition, we perform 100% quality control on both assembly and assembled finished products.

All LPG regulators come with a 5 year product warranty and \$ 5 million product liability insurance.

The factories have been audited and approved among others by international gas appliance companies and meet the high standards of these customer segments. Both factories are ISO9001 certified and in 2014 the NBSX factory was also BSCI certified ([www.bsci-int.org](http://www.bsci-int.org)), a social enterprise initiative aimed at ensuring compliance with the European Code of Conduct on Social Responsibility.

IGT aligns its production with the 17 United Nations Sustainable Development Goals to achieve a better and more sustainable future for all of us.



# IGT WORLD WIDE SALES NETWORK



IGT is a global supplier of domestic LPG Safety Device, with sales in over 120 countries.

IGT has a worldwide distribution sales network with own sales staff in Europe, United States, Russia-SNG countries, China and India.

See complete distributor and dealer list on [WWW.IGT-LPG.COM](http://WWW.IGT-LPG.COM)

- 📍 **Headquarters: Denmark**
- 📍 **Factory: Ningbo China, Hyderabad India**
- 📍 **Sales Office: Russia, USA, Kenya**

As a global gas regulator manufacturer IGT takes pride in product quality & durable products. We support UN Sustainable Development Goals with special focus on 3, 12 & 13. An extended product lifetime reduces environmental footprint.

IGT have reduced CO2 emissions by 30% since 2004, 70% reduction target is achievable before 2025.

# CONTENT

04	CERTIFICATES & OUR CUSTOMERS
05	GAS CYLINDER VS. REGULATOR WITH MANOMETER LEVEL INDICATOR
06	GAR LAW EU
07	GAS SAFETY FEATURES
10	COMMON OUTLETS
11	LOW PRESSURE REGULATORS-COMPACT SNAP ON REGULATOR FOR LPG A100IS-P
14	LOW PRESSURE REGULATORS-JUMBO CLICK ON REGULATOR FOR LPG A235IS-P
16	LOW PRESSURE REGULATORS-HAND WHEEL ON REGULATOR FOR LPG A300I-P
17	REGULATORS FOR USE IN CARAVAN AND BOATS
18	LOW PRESSURE REGULATORS-CAMPING REGULATOR FOR LPG A500ISP
19	A300USL SINGLE STAGE LOW PRESSURE GAS REGULATOR (CSA/UL)
20	MIDDLE PRESSURE REGULATORS-3KG/H 300-700MBAR REGULATORS A320P
21	LPG GAS REGULATORS A400IP
22	CHANGE OVER
23	HIGH PRESSURE REGULATORS B100/B235IS/B300
24	UNREDUCED PRESSURE COUPLING C100/C235IS
25	HOSE AND ACCESSORIES
26	PACKAGING
27	SHOP DISPLAYS



## CERTIFICATION WORLD WIDE



CE - Europe



REACH  
NTC - Europe



TUV - Rheinland



Gas Safety  
Certified  
SAI - Australia



CSA - USA&Canada



SABS - South Africa



SON CAP - Nigeria



SNI - Indonesia



DVGW - Germany



SIRIM - Malaysia



ISI - India



NTP - Peru



Gas del Estado  
- Argentina



NTC - Colombia



NCh - Chile

... and more

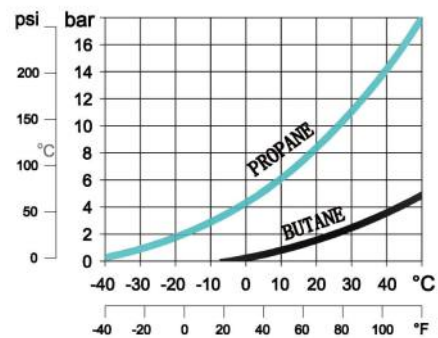
# GAS CYLINDER Vs. REGULATOR WITH MANOMETER LEVEL INDICATOR

## TYPE OF GAS IN THE CYLIDERS

The LPG contained in the cylinders are supplied either as Butane, or Propane, or a mix LPG of the two depending of country of use. Large quantities of flammable vapour can be produced from relatively small amounts of liquid LPG stored in cylinders and gas tanks. This makes LPG an ideal portable fuel. Cylinders must always remain upright to ensure only vapour exits the cylinder valve before it enters the regulators.

At atmospheric pressure Butane boils at -2C and propane boils at -45C

Contained in cylinders or bulk tank, LPG remains a liquid under pressure and this pressure depends on the type of LPG and the ambient or cylinder temperature surrounding the cylinder. The chart shows the vapor pressure within a gas cylinder at various ambient temperatures.

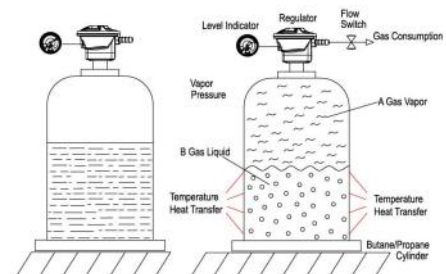


## VAPORISATION IN THE CYLINDER

When there is an off-take of gas from the gas cylinder, the gas volume consumed is regenerated by boiling off the liquid part. This vaporisation cools down the liquid. The heat required to continue the LPG to boil is transferred from the surrounding air in contact with the cylinder.

Propane or mixed LPG delivers high pressure at colder temperatures and is vaporized faster so it is used and stored outside. Butane is used mainly for indoor or summer use.

During off-take, the temperature and pressure decreases. When only a small drop of liquid remains in the cylinder, the gas pressure has reached the minimum of 0.3bar, The larger the cylinder the greater the surface area, and the more GAS vapor can be supplied



## TYPICAL VAPOURISATION RATES ON CYLINDERS

The GAS flow rate supplied depends on the type of gas, the liquid gas level in the cylinder, the ambient temperature, and the duration of use.

Cylinders can only supply a certain rate of vapor and must be sized correctly to meet the consumption of the appliances. Often an overlooked part of a LPG installation is the correct sizing or number of cylinders applied to ensure that the cylinder regulator delivers the correct flow rate.

The nominal capacity of the regulator is normally "the worst case scenario", to ensure the regulator operate in both very cold or hot climatic conditions and at lowest cylinder contents. This means in most cases our regulators are able to supply more than the rated capacity for a short time. However off-take rates for cylinders are typically less than the regulators nominal capacity as indicated in the overview.

Recommended maximum offtake rates for LPG cylinders

Cylinder Size kg	Offtake rate kg/h	Offtake rate kw(kilowatt)
15kg	0.70kg/h	9.70
13kg	1.05kg/h	14.60
19kg	1.32kg/h	18.35
47kg	2.37kg/h	32.94

## **NEW EU LAW** **"GAS APPLIANCE REGULATION"**

The new EU law GAR demand manufactures /importers/retailers to conduct a risk assessment for the products sold.

GAR demand IGT must use "State of art' components and technologies and it is the obligation of manufacturer/importer/retailer to select the most appropriate product solution to eliminate and reduce the risk described in the risk assessment.

Based on the risk assessment Manufacturer/Importer/Retailer must review old products made and sold to GAD before 21april 2018 and improve them if needed under GAR.

All levels in the supply chain must comply with following demands in GAR:

- Eliminate or reduce the risks as far as possible ( inherently safe design and construction)
- Take necessary protection measures in relation to risk that cannot be eliminated
- Inform the users of any residual risk, due to any short comings are required

IGT have identified in our risk assessment :

- Risk of gas accidents that can be eliminated 100% by applying a manual excess flow valve.
- Risk of gas leakage that requires a manometer as necessary protection measures built onto the regulator (inherently safe design requirement) for the consumer as such risk cannot be eliminated
- IGT also have identified risk of connecting the gas hose to the nozzle gas tight by physically weak clients and it is our evaluation that a threaded connection 1/4" Lh in brass can be connected with the hose nut 1/4" in brass by all clients including client without significant physical strength.

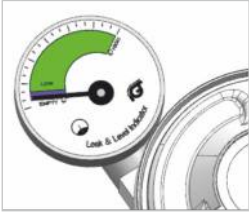
**For EU the recommended regulators to meet the GAR best possible are IGT Models :  
A310iep-PM, A100isp-PM or A235isp-PMV, A500isp-PM for now.**

EU Importers/retailers are welcome to make their own risk assessment to GAR and continue to buy the simple regulators if their own risk assessment shows this is sufficient to meet above GAR demands. Whenever there is a gas accident with product supplied under GAR the risk assessment that was made and used by the retailer shall be presented to police/gas authorities and insurance companies in the EU country and these will then evaluate if the risk assessment made is correct and justified to GAR.

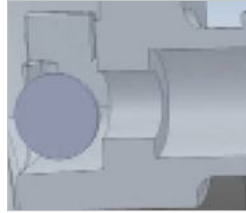
If these bodies find the risk assessment was not correct and the accident could have been eliminated or reduced by using for example A310iep-PM then the retailer is responsible not IGT.



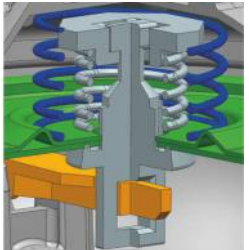
# Gas Safety Features



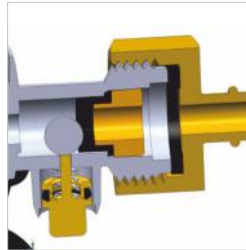
IGT regulators with low level indicator will help users to make a precise & convenient leak test, and continuously monitor low gas level.



The automatic hose failure safety (Excess Flow Valve) Cut off 90% of gas flow and reduce an accident



Diaphragm relief valve, opens at a preset pressure i.e 150mbar. Protect against over pressure in down stream pipes. Only for outdoor use or in ventilated compartments.



IGT regulators with manual excess flow valve will cut off 100% of gas flow in case of a big leakage and stop an accident before it develops.

## IGT Low Level Indicator and Leak detection gauge

The main purpose of the indicator is to enable the end user to conduct easily a gas leak test before consumption is started up.

This should be done regularly to identify any small gas leaks before they develop into gas accidents. See our online UTUBE videos. The gas level indicator function is working on the gas pressure

The special IGT indicator has a scale of 0-4 bar (Butane) and 0-6 bar (Propane/ 0-2 bar LPG) when gas pressure exceeds these pressures the scale indicate "full" gas level. And the needle stands firm at the end of the scale.

This scenario will be actual for most full new cylinders. The manometer gauge will start moving down only when the gas pressure is less than 4-6 bar. This happens at normal surrounding temperatures when the gas level is low inside the gas cylinder.

Typically Then there is then 0,5-1 kg gas left in the cylinder. As the remaining gas is consumed the needle will move towards the yellow part and indicate to the consumer the gas lower level.

**LPG A200isp-PM**  
**0-2 bar scale**

**Butane**  
**0-4 bar scale**

**Propane**  
**0-6 bar scale**



# Gas Safety Features

## Level indication: LP Gas - Butane - Propane

Actual gas level can only be observed during gas consumption from the gas cylinder to gas appliance.

EMPTY



Cylinder empty no more liquid Gas Do not use before cylinder is re-filled. Pressure less than 0,3.

LOW



Early warning – Plan re-fill soonest. Liquid level estimate 0,2-0,8 kg ~ 1 to 4 hr use Pressure between 0,3 and 1,3 bar.

HIGH



Sufficient level of gas inside cylinder. Ready to go on. Estimated level of gas min. 1kg ~ 5 hr use Pressure between 1,3 and 7,5 bar.

## Leak detection: LP Gas - Butane - Propane

- Regulator is connected to gas appliance by a gas hose. Gas appliance should be in shut off position.
- Regulator is attached in correct position on the gas cylinder valve.
- The Regulator is switched to ON position. The dial of the indicator should then go into green area.
- The Regulator switch is moved back to OFF position. The dial of the indicator should then remain in green area.
- Wait 1 minute. If the dial is still in the same green area the installation is safe without leaks. If the dial have moved to yellow or blue colour, the installation is not safe and should be checked by using leak Detecting spray.
- Any leak should be eliminated before use of the gas appliance.

Warranty:

All IGT Regulators are supplied with 5 years warranty Terms applies.

# LOW PRESSURE REGULATOR - Compact

## Snap on regulator for LPG A100is-P

### Application:

Used in conjunction with a cylinder valve to reduce cylinder pressure to a 28-50 mbar outlet pressure.

Connected with domestic Appliances: Stoves, Cookers, Cabinet Heaters, Patio Heaters, BBQ, etc.

### Technical Information

Inlet size	20 / 21 / 22 / 25.6 / 27 mm
Outlet size	8 / 10 / 11mm thread 1/4"LH
Rated capacity	1.5 kg/h
Optional excess flow valve	Either Automatic or Manual Activated
Outlet pressure options	28 mbar, 29 mbar, 30 mbar 37 mbar 50 mbar
Optional diaphragm	Relief valve
Optional manometer	For leak test and gas level indication
Body and cover	Die cast zinc alloy/Optional Aluminum
Diaphragm	NBR



**Basic Type**

A100is-P



**Standard Type**

A100ise-P



**Premium Type**

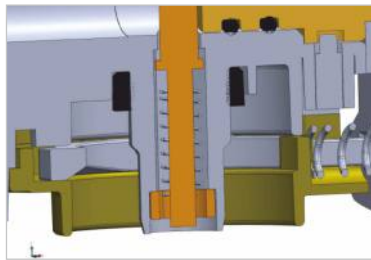
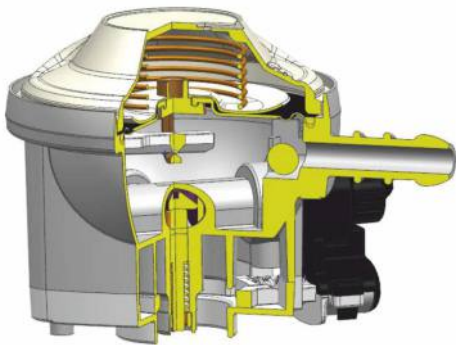
A100isp-P



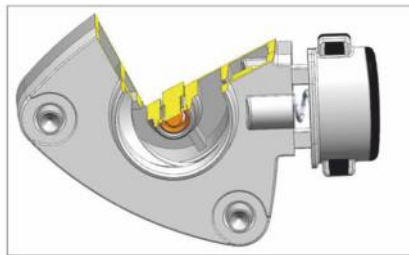
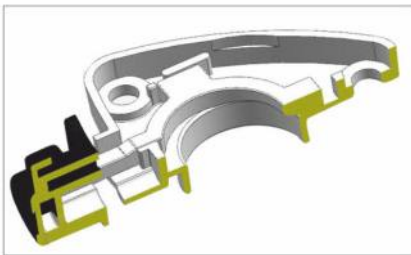
**Premium Plus Type**

A100isp-PM

**IGT type A100is regulator**



A dual seal can be added  
It can establish a gas tight connection to the cylinder valve up to 17 bar.

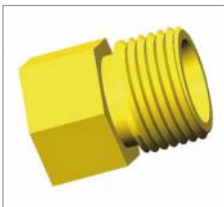


Metal integrated on/off push guarantee regulator can always be disconnected from the valve,

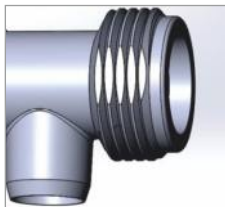
**Standard**

**Most common outlets threads**

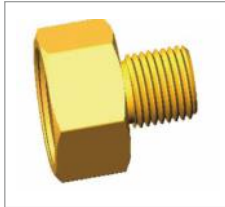
G1/2" LH Brass



M20x1.5



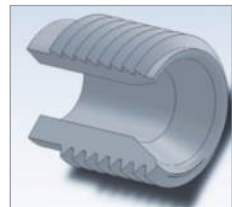
G1/4" LH Brass



H6:3/8" LH Thread connector Zinc

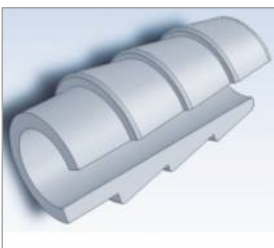


H4:1/4" LH Thread connector Zinc

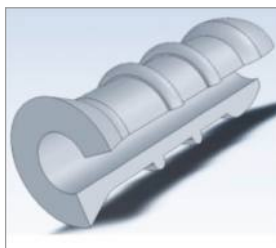


**Most Common Outlets Nozzles**

H51: Gas Hose ID 10-11mm



H50: Gas Hose 8mm



The G1/4"LH thread is recommended in Brass to ensure a low torque connection to a brass nut and nipple on the hose side.  
Brass to brass: 2-3Nm  
Brass to zinc: 12-14Nm  
Steel to zinc: >18Nm  
Force needed to establish a gas tight connection.

## Basic + Standard Type A100isp-P

Inlet size	20 / 21/22 / 25.6 /27 mm
Outlet size	8 / 10 / 11mm
Capacity	1.5 kg/h
Excess Flow	Auto
Color options	Silver metallic
Regulator Size	Diameter Ø63mm



Pic 1



Pic 2



Pic 3



Pic 4

## Premium Type A100isp-P

Inlet size	20 / 21/22 / 25.6 /27 mm, G61
Outlet size	8 / 10 / 11mm, 1/4" LH thread
Capacity	1.5 kg/h
Excess Flow	Manual
Color options	Silver, blue, yellow, orange, red, Silver metallic
Regulator Size	Diameter Ø63mm



Pic 5



Pic 6



Pic 7



Pic 8

## Premium Plus Type A100isp-PM

Inlet size	20 / 21/22 / 25.6 /27 mm, Bayonet
Outlet size	8 / 10 / 11mm, 1/4" LH thread
Capacity	1.5 kg/h
Manometer	Gas leak & level indicator with 360° rotating
Excess Flow	Manual
Color options	Silver, blue, yellow, orange, red, Silver metallic
Regulator Size	Diameter Ø63mm



Pic 9



Pic 10



Pic 11



Pic 12

# LOW PRESSURE REGULATOR - Jumbo

## Click on Regulator for LPG A235is-P

### Application:

Used in conjunction with a cylinder valve to reduce cylinder pressure to a 28-67 mbar outlet pressure.

Connected with domestic Appliances: Stoves, Cookers, Cabinet Heaters, Patio Heaters, BBQ, etc.

### Technical Information

Inlet size	35mm
Outlet size	8 / 10 / 11mm , 3/8" BSP or G1/2" thread connector
Rated capacity	1.5 kg/h
Optional excess flow valve	Either Automatic or Manual Activated
Outlet pressure options	28 / 29 / 30 / 37 mbar / 50 mbar / 67 mbar
Optional diaphragm	Relief valve
Optional manometer	For leak test and gas level indication
Body and cover	Die cast zinc alloy/Optional Aluminum
Diaphragm	NBR



**Basic Type**  
A235is-P



**Standard Type**  
A235is-P



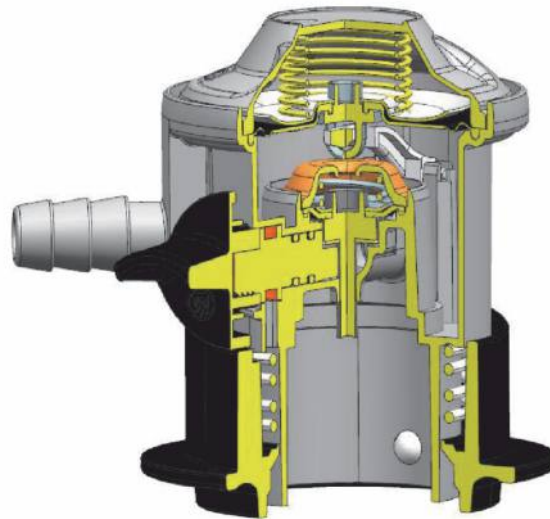
**Premium Type**  
A235isp-P



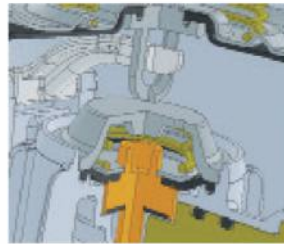
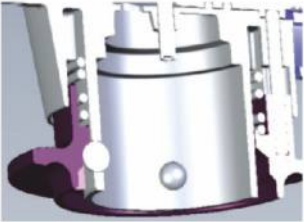
**Premium Plus Type**  
A235is-PPM

# Jumbo click on regulator

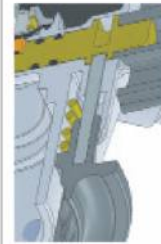
## IGT Type A235is-P Regulator



G56: 35mm inlet (Click on system)



Two stage regulator securing less than 2 bar pressure at valve seal. And a flow performance up to 2 kg gas/h



Extra security inter lock feature. To ensure gas flow cannot be opened unless locking ring in locked position

## Basic Standard Type A235is-P

Inlet size	35mm
Outlet size	8mm / 10mm / 11mm
Capacity	1.5 - 2.0 kg/h
Excess Flow	No
Color options	Silver metallic
Regulator Size	Diameter Ø63mm



Pic 1



Pic 2

**Standard Type A235/A235is-P**

Inlet size	35mm
Outlet size	8/ 10 / 11mm, 3/8" BSP or G1/2" thread connector
Capacity	1.5 kg/h
Excess Flow	Automatic
Safety on/off switch	With or Without
Color options	Silver, Blue, Yellow, Red, Orange, Sliver Matalic
Regulator Size	Diameter Ø76mm and Ø63mm



Pic 3

**Premium Type A235isp-P**

Inlet size	35mm
Outlet size	8/ 10 / 11mm, 1/4" LH thread
Capacity	1.5 - 2.0 kg/h
Excess Flow	Manual
Safety on/off switch	Yes
Color options	Silver, Blue, Yellow, Red, Orange, Sliver Matalic
Regulator Size	Diameter Ø63mm



Pic 4



Pic 5

**Premium Plus Type A235isp-PPM**

Inlet size	35mm
Outlet size	8mm / 10mm / 11mm
Capacity	1.5 - 2.0 kg/h
Excess Flow	Manual
Safety on/off switch	Yes
Manometer	Gas leak & level indicator with 360° rotating
Color options	Silver, Blue, Yellow, Red, Orange, Sliver Matalic
Regulator Size	Diameter Ø63mm



Pic 6



Pic 7



# LOW PRESSURE REGULATOR - Regulator for LPG A235IT

## Application:

Used in conjunction with a cylinder valve to reduce cylinder pressure to a 28-67 mbar outlet pressure.

Connected with domestic Appliances: Stoves, Cookers, Cabinet Heaters, Patio Heaters, BBQ, etc.

## Technical Information

Inlet size	35mm
Outlet size	8 / 10 / 11mm , 1/4"LH thread , 3/8"LH , Chile
Rated capacity	1.5 kg/h
Optional excess flow valve	Either Automatic or Manual Activated
Outlet pressure options	28 / 29 / 30 / 37 / 50 / 67 mbar
Optional diaphragm	Relief valve
Optional manometer	For leak test and gas level indication
Body and cover	Die cast zinc alloy/Optional Aluminum
Diaphragm	NBR



**Basic Type**  
A235IT



**Standard Type**  
A235IT



**Premium Type**  
A235IT-P



**Premium Plus Type**  
A235ITP-PM

# LOW PRESSURE REGULATOR - Hand Wheel Regulator for LPG A300i-P

## Application:

Used in conjunction with a hand wheel cylinder valve to reduce cylinder pressure to a 28-50 mbar outlet pressure.

Connected with domestic Appliances: Stoves, Cookers, Cabinet Heaters, Patio Heaters, BBQ, etc.

## Technical Information

Inlet size	Numerous possible types of inlet
Outlet size	8 / 10 / 11mm nozzle, 1/4" LH thread connector
Rated capacity	1.5 kg/h
Outlet pressure options	28 mbar, 30 mbar 37 mbar 50 mbar
Nut options	Brass or Steel
Optional manometer	For leak test and gas level indication
Body and cover	Die cast zinc alloy/Optional Aluminum
Diaphragm	NBR



**Basic Type**  
A300i/A310i-P



**Standard Type**  
A300ie/A310ie-P

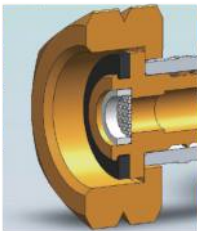
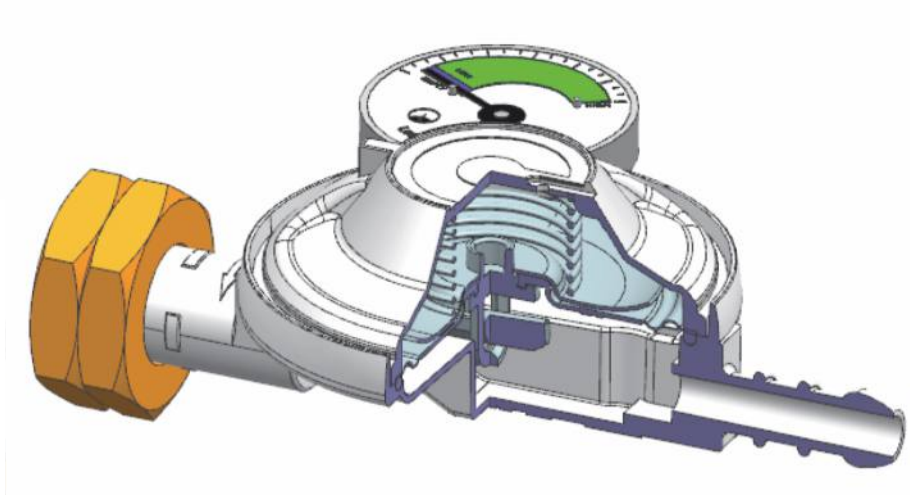


**Premium Type**  
A300iep/A310ip-P

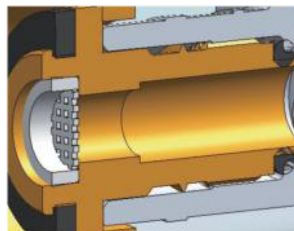


**Premium Plus Type**  
A300ip-M/A310ip-PM

# Hand wheel on regulator



Filter at inlet to prevent foreign matters to enter regulator

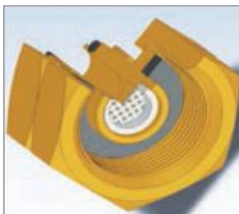


Inlet pressed secured by crimping included rubber o-ring as secondary seal

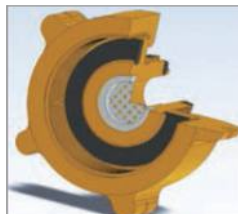
## Standard

### Most Common Inlets

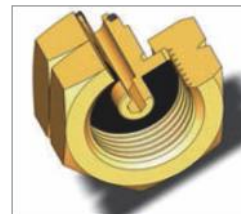
G1: W20x1/4" LH



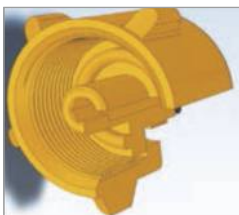
G2: W21.8X1/4" LH



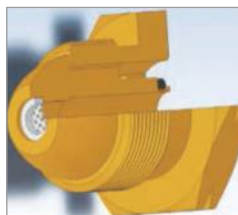
G5: W21.8X1.8/14" LH



G12: W21.8X1/4" LH



G7: 5/8" LH Hardnose



G10: US POL 0.880 NGO LH



## Standard Type A300ie/A310ie-P

Inlet size	Numerous possible types of inlet
Outlet size	8mm / 10mm / 11mm, 1/4" LH
Capacity	1.5 kg/h
Excess Flow	Yes
Color options	Sliver, Blue, Red, Yellow, Silver metallic
Regulator Size	Diameter Ø63mm



Pic 1



Pic 2



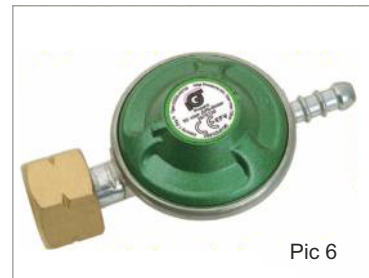
Pic 3



Pic 4



Pic 5



Pic 6



Pic 7



Pic 8



Pic 9



Pic 10



Pic 11

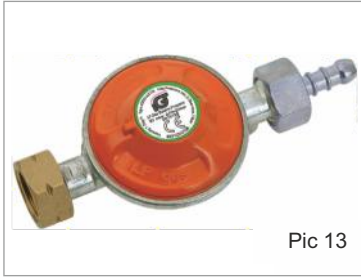


Pic 12

# Hand wheel on regulator

## Premium Type A300iep/A310iep-P

Inlet size	Numerous possible types of inlet
Outlet size	8mm / 10mm / 11mm, 1/4" LH
Capacity	1.5 kg/h
Excess Flow	Yes
Color options	Sliver, Blue, Red, Silver metallic
Regulator Size	Diameter Ø63mm



Pic 13



Pic 14



Pic 15

## Premium Plus Type A300iep/A310iep-PM

Inlet size	Numerous possible types of inlet
Outlet size	8mm / 10mm / 11mm, 1/4" LH
Capacity	1.5 kg/h
Manometer	Gas leak & level indicator with 360° rotating
Excess Flow	Yes
Color options	Sliver, Blue, Red, Yellow, Silver metallic
Regulator Size	Diameter Ø63mm



Pic 16



Pic 17



Pic 18



Pic 19



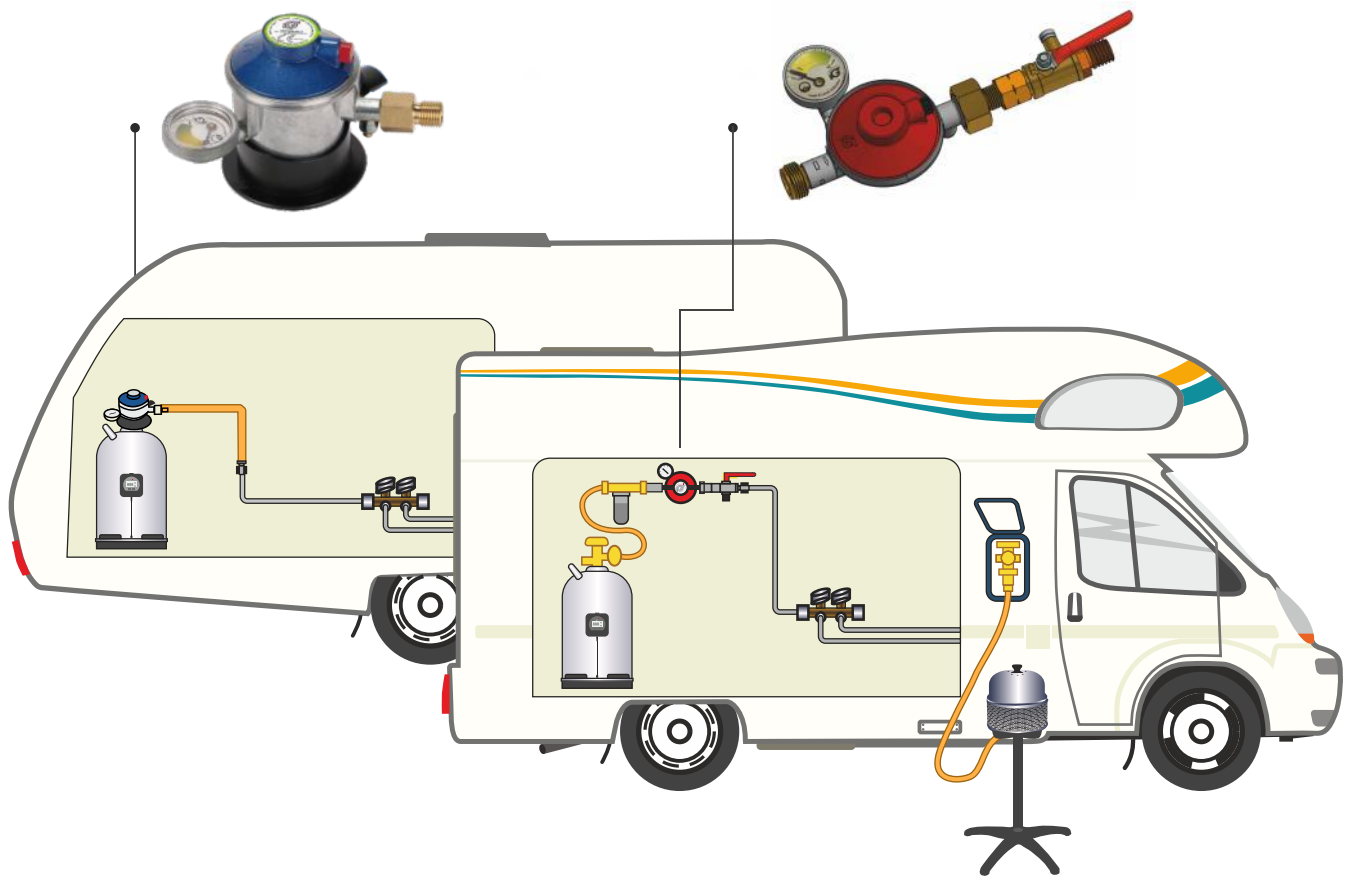
Pic 20



Pic 21

# Regulators for use in CARAVAN & BOAT

- Regulators for use in Caravans and Boats shall meet EN16129 / Appendix D/M.
- Installation shall be made according to EN1949 and for boats ISO10239 as well.
- National rules may apply.
- Professional gas leak test as per EN1949 - recommended DVGW arbeitsblatt G 607.
- Can be conducted through the test point M5 on the ball valve.
- Observe hose length of Maximum 450mm to cover tubing.



## Boat & Caravan A511i-P / A511i-PM



Inlets: M14x1.5



Inlets: M16x1.5

## Boat & Caravan A235is-P / A235is-PM



# Caravan & boat regulator

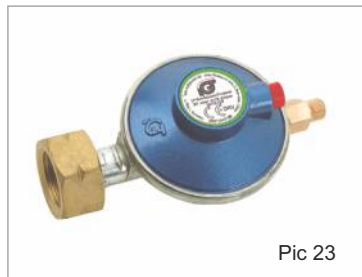
## Technical Information

Inlet size	Numerous possible types of inlet
Outlet size	8 / 10 / 11mm nozzle, 1/4"LH - M20x1.5
Rated capacity	1.5 kg/h
Outlet pressure options	30 mbar
Excess flow	Manual
Safety on/off switch	With or Without
Optional manometer	For leak test and gas level indication
Diaphragm	Ø63mm
PRV	Yes

## A311iep-PM/A300iep-PM



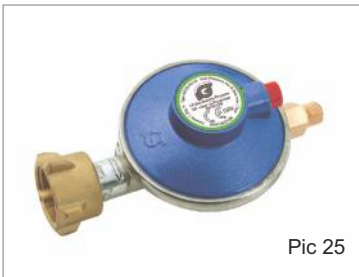
Pic 22



Pic 23



Pic 24



Pic 25



Pic 26



Pic 27



Pic 28



Pic 29



Pic 30

# LOW PRESSURE REGULATOR - Camping Regulator for LPG A500is - A512is

## Application:

Used for outdoor camping gas cylinders for household.  
The rotating inlet allow easy mounting of regulator to gas cylinder.  
Instead of rotating the 2-3kg gas cylinder rotate the inlet wheel!!

## Technical Information

Inlet size	M14, M16, 7/16"
Outlet size	8/10/11 mm nozzle, 1/4" LH thread connector
Rated capacity	1.5 kg/h
Optional excess flow valve	Either Automatic or Manual Activated
Outlet pressure options	28 mbar, 30 mbar
Optional rotating inlet	Yes
Optional diaphragm	Relief valve
Optional manometer	For leak test and gas level indication
Body and cover	Die cast zinc alloy/Optional Aluminum
Diaphragm	NBR

### Basic Type A500is

Regulator size: Diameter Ø63mm



### Standard Type A500is

Regulator size: Diameter Ø63mm



### Standard Type A512is-P

Regulator size: Diameter Ø63mm



### Premium Type A500is-PM

Regulator size: Diameter Ø63mm



### Premium Type A512isp-M

Regulator size: Diameter Ø63mm







# A300USL - Single Stage Low Pressure Gas Regulator



## Features:

Excess flow valve  
 diaphragm relief valve  
 50000 times cycle test = simulation of 10 years life time  
 PLI (product liability insurance) 5 million usd  
 5 years limited warranty

## Optional features:

Manometer for leak test and gas level indication.

## Technical Information

Inlet Pressure	25-250 PSIG
Outlet Pressure	280mm H <sub>2</sub> O=(11"W.C.)
Flow capacity	1.5Kg/hr
BTU/hr	70500
Inlet Connection	QCC / P.O.L / LCC
Outlet Connection	5/8" - 18 UNF
Application	BBQ, Fish Cookers, Gas Heaters, Stoves
Braided hose	Option



Pic 1



Pic 2

## High Pressure Regulator



Pic 3



Pic 4

## Technical Information

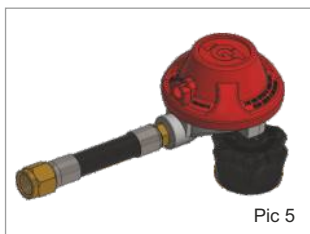
Inlet	1/4 - 18 NPT
Outlet	1/4 - 18 NPT
Inlet Pressure	0 - 20 PSIG
Outlet Pressure	25 - 250 PSIG
BTU	142810



# A300USL - Single Stage Low Pressure Gas Regulator



## 95000 BTU Regulator



Pic 5

### Technical Information

Inlet	QCC-1 / LCC
Outlet	3/8" FLARE - 5/8" 18 UNF
Inlet Pressure	25 - 250 PSIG
Outlet Pressure	11 W.C.
BTU	95200
Certificate	CSA - AGA

Optional with QCC or POL type inlet and Hose assemblies.

## Two stage Regulator



Pic 6

### Technical Information

Inlet	US POL / QCC-1
Outlet	1/4"-18 NPT or 3/8"-18 NPT
Inlet Pressure	25 - 250 PSIG
Outlet Pressure	11 W.C.
BTU	124800

## Governor Regulator



Pic 7

Inlet	3/8"-18 NPT, 1/2"-14 NPT
Outlet	3/8"- 18 NPT, 1/2"-14 NPT
Inlet Pressure	1/2 PSIG (Max) In + Out
Delivery Pressure	NG 5 W.C - LPG 11 W.C
BTU	180.000



Pic 8

Inlet	3/8"- 18 NPT, 1/2"-14 NPT
Outlet	3/8"- 18 NPT, 1/2"-14 NPT
Inlet Pressure	1/2 PSIG (Max) In + Out
Delivery Pressure	4 W.C - 10 W.C
BTU	100.000



Pic 9

Inlet	1/4" - 18 NPT, 3/8"-18 NPT
Outlet	1/4" - 18 NPT, 9/16"-24 UNF, 3/8"-18 NPT
Inlet Pressure	1/2 PSIG (Max) In + Out
Delivery Pressure	4 W.C - 10 W.C
BTU	50.000

# Middle Pressure Regulator - 3kg/h 300-700mbar Regulators A320

## Application:

Used for large gas application, such as industrial heaters.

## Technical Information

Inlet options	Numerous possible types of inlet
Outlet options	1/4" LH thread connector & 3/8" LH Brass
Rated capacity	3 kg/h
Outlet pressure options	300/500/700 mbar
Nut options:	Brass or Steel
Body and cover	Die cast zinc alloy
Diaphragm	NBR
Regulator size:	Diameter Ø76mm



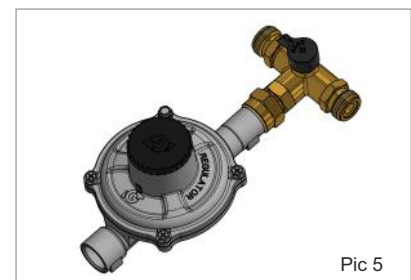
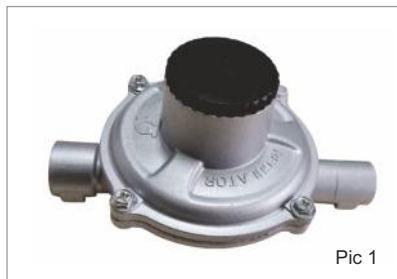
# Middle Pressure Regulator - 4kg/h A400i

## Application:

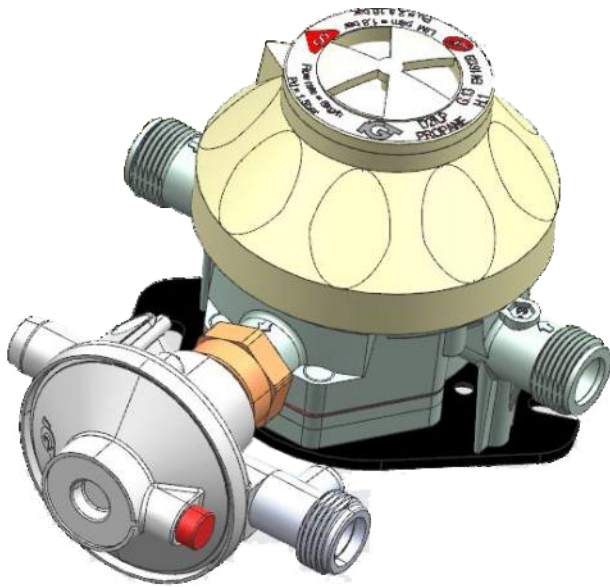
To reduce the pressure of LPG in the domestic installation. Optional with internal relief valve security system, to prevent over press in the pipeline.

## Technical Information

Inlet options	Numerous possible types of inlet
Outlet options	10mm, 3/8"LH thread connector
Rated capacity	3 kg/h
Outlet pressure options	30/700 mbar
Nut options:	Brass or Steel
Body and cover	Die cast zinc alloy
Diaphragm	NBR
Regulator size:	Diameter Ø76mm



# CHANGE OVER REGULATOR - 1.5 kg/h Caravan changeover applications.

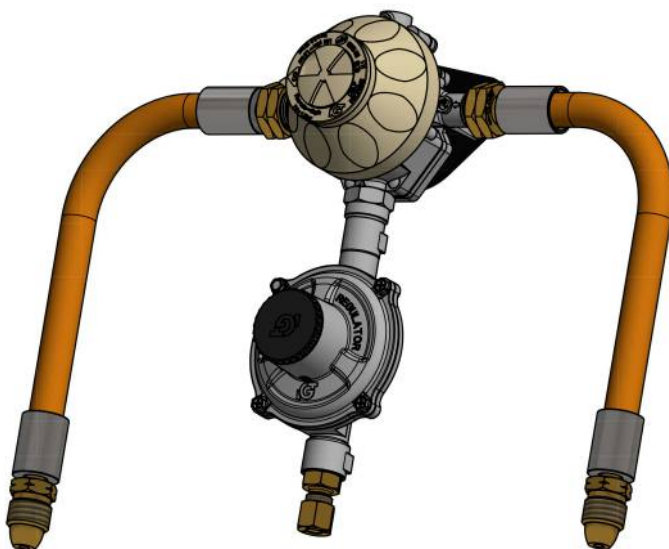


The EN1949 Standard define Design Regulations for LPG installations in RV in EV. A.O it define the maximum gas flow of regulators to be 1.5 Kg/h.

## Specifications

Approvals	CE/NF 16129/D
Inlet	M20x1,5mm
Outlet	8 or 10mm Compression fitting EN8434
Variants	Vertical or horizontal /pointing left or right
Test point	Yes
CSR	BSCI certified
Inbuilt	Crash sensor - Excess flow valve

## 4 kg/h change over for Leisure & Professional applications



## Specifications

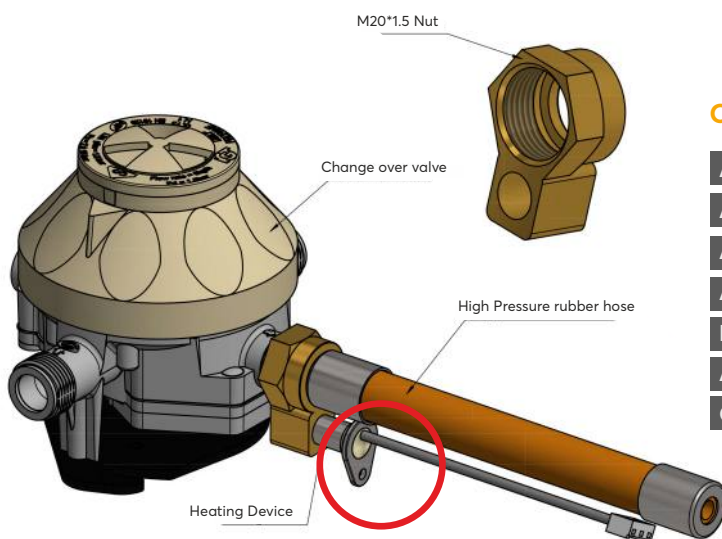
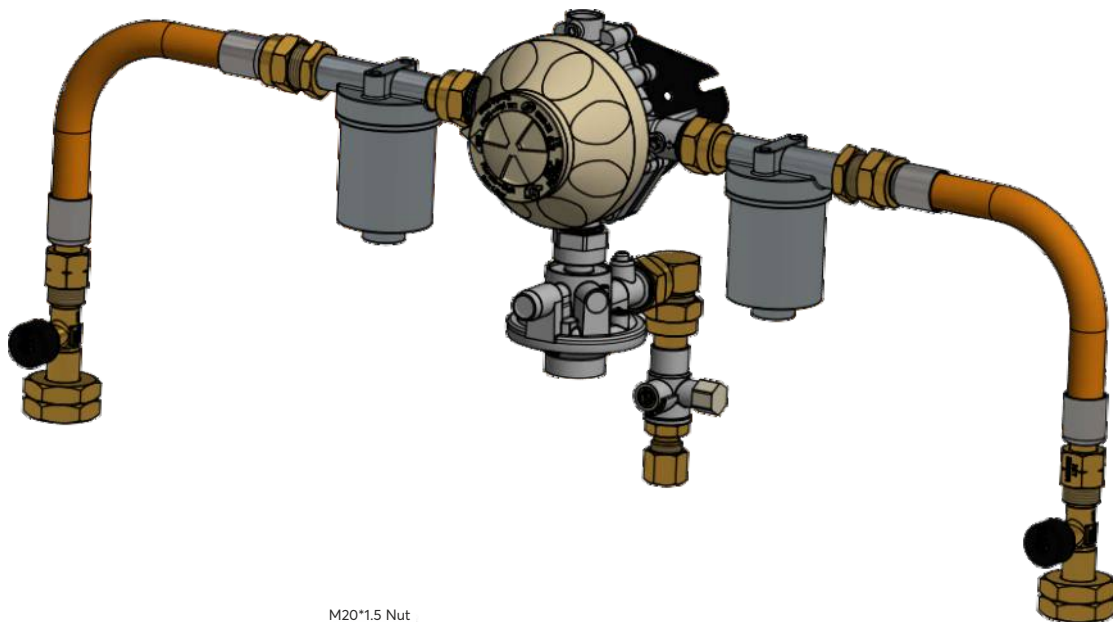
Approvals	CE/NF 16129
Inlet	M20x1,5mm
Outlet	8 or 10mm Compression fitting EN8434, 3/8"RH
Variants	Vertical only
Test point	Yes, Optional A900 - V003
CSR	BSCI certified
Option	Remote shutoff by solenoid valve

# Complete caravan changeover kit

## 1.5 kg/h EN1949 & EN16129/D compliant

### CRASH SENSOR / EN1949

- Excess flow valve for automatic cut-off of gas in case of accidents.
- Gas Filter reduces impurities & enhances product life time. With lower cup.
- Exchangeable oil absorption cotton pad by hand.
- No gas purge of high pressure gas needed.
- Inbuilt check valve closes off when lower cups unscrewed.
- Pressure Relieve Valve 150mBar protects gas system against excess pressure.
- 10-year warranty for regulator excluding hose assembly.
- Both the automatic change over and the second stage regulator have each been marketed for more than 10 years.



### Options

A900 - V003	Ball valve with test point
A900 - 235	3/8" compression outlet fittings
A900 - 236	RVS 8mm
A900 - 237	RVS 10mm
H900-007	Gas solenoid valve for remote shut off
A900 - F011	Gas Filter Double Cup
Outlet Pressure	Optional 50mbar - 67mbar

# High Pressure Regulator

## B100/B235is/B300

### Snap on compact HP regulator B100

#### Application:

Used in conjunction with a cylinder valve to reduce cylinder pressure to a 0-2 bar outlet pressure required for operation of torches, burners and furnaces for commercial and industrial applications

#### Technical Information

Inlet options	20/21/22/27mm
Outlet options	8mm/11mm
Rated capacity	8 kg/h
Outlet pressure options	0-2 bar (Adjustable)
Body and cover	Die cast zinc alloy
Diaphragm	NBR



### Jumbo HP regulator B235is

#### Application:

Used in conjunction with a cylinder valve to reduce cylinder pressure to a 0-4 bar outlet pressure required for operation of torches, burners and furnaces for commercial and industrial applications

#### Technical Information

Inlet size	35mm
Outlet options	8/10/11mm, 3/8" BSP or G1/2" thread connector, G12
Rated capacity	4 kg/h
Outlet pressure options	0-4 bar (Fixed or Adjustable)
Body and cover	Die cast zinc alloy
Diaphragm	NBR
Optional	metal on/off cap



B235isf



B235is

# High Pressure Regulator

## B100/B235is/B300

### Hand Wheel HP regulator - B300/B310/B310-M

#### Application:

Used in conjunction with a cylinder valve to reduce cylinder pressure to a 0-4bar outlet pressure required for operation of torches, burners and furnaces for commercial and industrial applications

#### Technical Information

Inlet options	Numerous possible types of inlet
Outlet options	3/8" BSP thread connector
Outlet pressure options	1.5 / 2.5 / 4bar / Adjustable
Nut material options	Steel or Brass
Body and cover	Die cast zinc alloy
Diaphragm	NBR



### Excess Flow Valve -A900

#### Technical Information

Inlet	Female 3/8" LH
Outlet	Male 3/8" LH
Inlet press	1.5 - 4 bar
Cut off rate	6-8.5 kg/hr
Approved by	DVGW





## Gas Cartridge Adaptor Set

### Application:

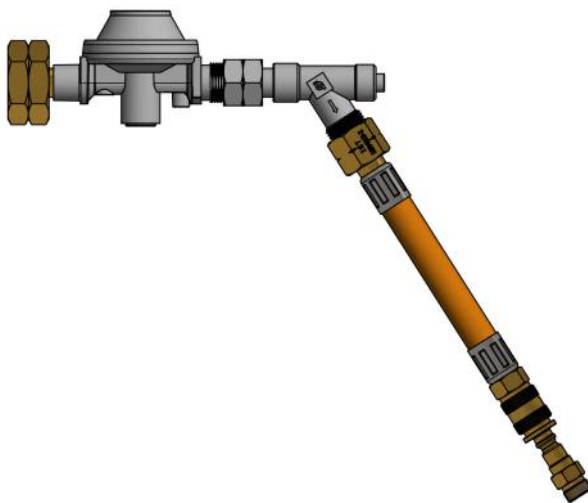
Used in conjunction with a cylinder valve to reduce cylinder pressure to a 0-2 bar outlet pressure required for allowing replacement of gas cartridge with standard gas cylinders.

### Technical Information

Inlet options	All
Outlet options	7/16"
Rated capacity	8kg/h
Outlet pressure options	2BAR
Body and cover	Die cast zinc alloy
Diaphragm	NBR
Check valve	Yes



## Quick Coupling Version



# Unreduced Pressure Coupling C100/C235is

## Compact Coupling C100

### Application:

Used in conjunction with a cylinder valve to deliver an unreduced pressure required for operation of torches burners and furnaces for commercial and industrial applications

### Technical Information

Inlet options	20/21/22/22.6/27mm
Outlet options	8/11mm, 1/4" LH and 1/2" LH thread
Rated capacity	4 kg/h
Body and cover	Die cast zinc alloy
Valve	With non return valve
	Vertical and Horizontal



## Jumbo Coupling C236is

### Application:

Used in conjunction with a cylinder valve to deliver an unreduced pressure required for operation of torches burners and furnaces for commercial and industrial applications

### Technical Information

Inlet options	35mm
Outlet options	8/10/11mm, 3/8" BSP or G1/2" Thread connector
Rated capacity	4 kg/h
Outlet pressure options	Full cylinder pressure
Body and cover	Die cast zinc alloy
Valve	With non return valve
Diaphragm	NBR



# PACKAGING

## Options For Packaging

Color box, Display box, Floor Display Packaging



Plastic bag with header card packaging



Blister packaging



# SHOP DISPLAY

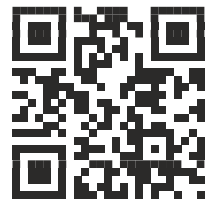
## Table and Floor Display











[WWW.IGT-LPG.COM](http://WWW.IGT-LPG.COM)



**Integrated Gas  
Technologies**

**Denmark**

Version 1.0.

**HEAD OFFICE IN DENMARK  
INTEGRATED GAS TECHNOLOGIES**  
Gydevang 39-41 DK-3450 Allerød Denmark  
Tel: 0045-4576 9921 | Fax: 0045-4576 9821  
E: sales@igt-lpg.com | W: www.igt-lpg.com

**FACTORY IN CHINA  
NINGBO SHUAI XIAN REGULATOR CO. LTD**  
No 566, Jinshan Road, Zone C, Investment center  
Jiangbei District, Ningbo Zhejiang, China  
E: sales@igt-lpg.com | W: www.igt-lpg.com

**FACTORY IN INDIA  
INTEGRATED GAS CONTROLS TECHNOLOGIES PVT. LTD**  
Survey No.784, 14-59/3A,  
Medchal Village, Near Ravalkole  
"X" Road, Medchal Mandal  
& Medchal - Makajgir District.  
E: info@igt-lpg.in | W: www.igt-lpg.in

**40+**  
MILLION  
SAFE FAMILIES

**120+**  
COUNTRIES

**400+**  
PRODUCTS

**25+**  
CERTIFICATES